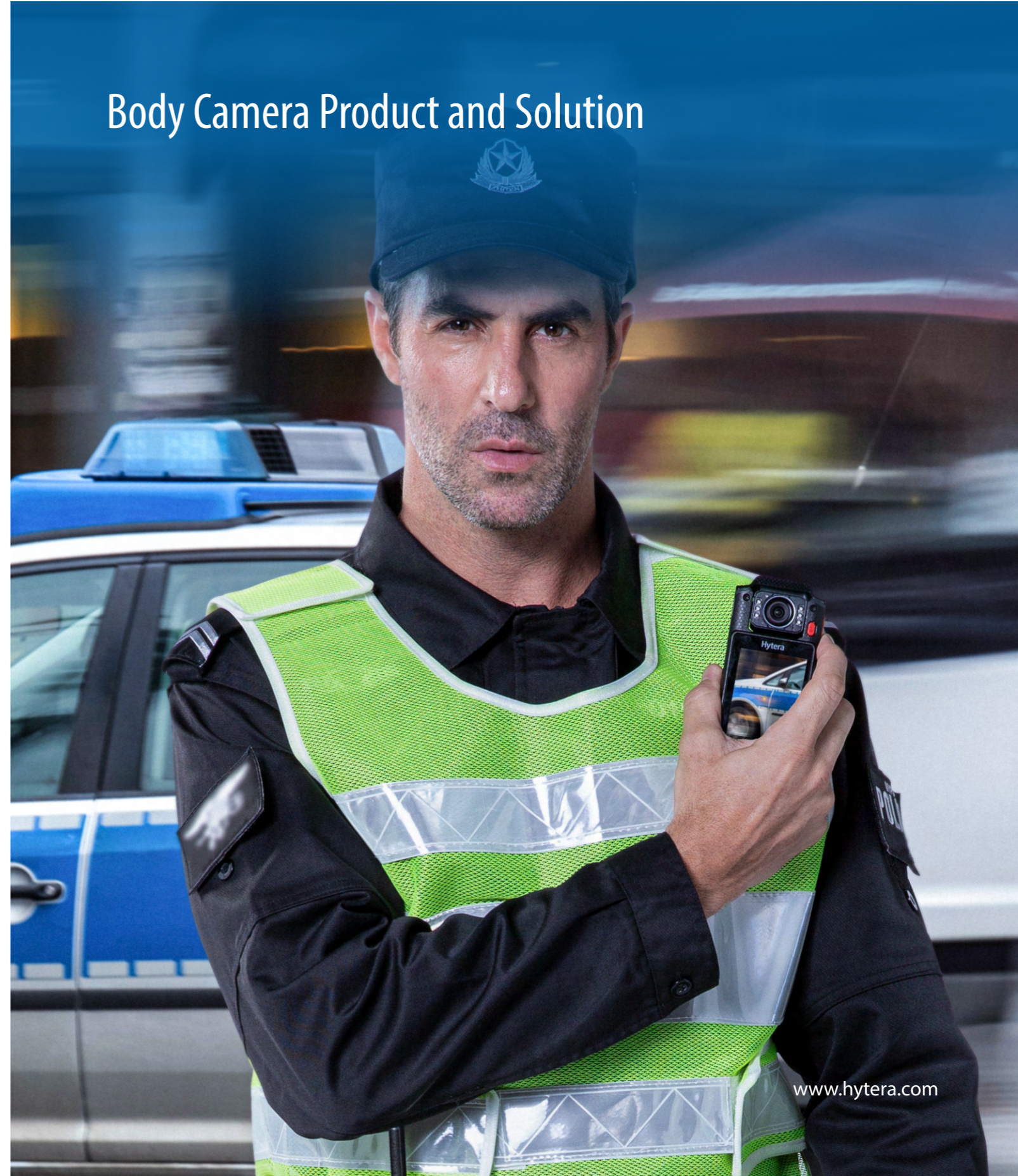




# Body Camera Product and Solution



**Hytera Communications Corporation Limited**

Stock Code: 002583.SZ

Address: Hytera Tower, Hi-Tech Industrial Park North, 9108# Beihuan Road, Nanshan District, Shenzhen, P.R.C

Tel: +86-755-2697 2999 Fax: +86-755-8613 713 Post: 518057

Http://www-hytera.com marketing@hytera.com



Hytera retains right to change the product design and specification. Should any printing mistake occur, Hytera doesn't bear relevant responsibility. Little difference between real product and product indicated by printing materials will occur by printing reason.

HYT, Hytera are registered trademarks of Hytera Communications Corporation Limited. © 2023 Hytera Communications Corporation Limited. All Rights Reserved.

# Content

## Body Camera

- 4G Body Camera SC580
- 4G Body Camera VM780
- 4G Body Camera VM750D
- General Body Camera GC550

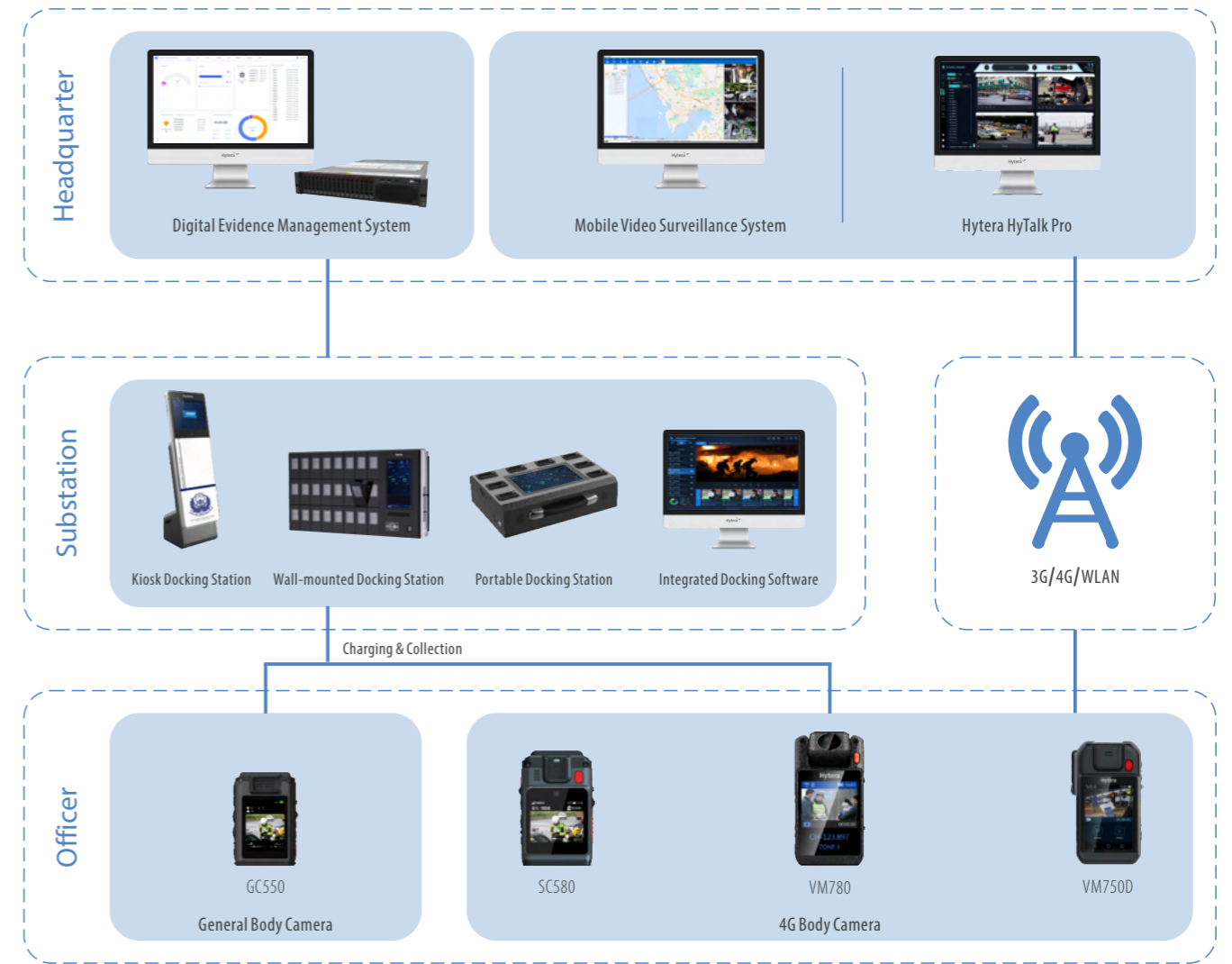
## Docking Station

- Wall-mounted Docking Station EDS50
- Portable Docking Station EDS30
- Kiosk Docking Station ZCS-HYT65

## Video Management System

- Integrated Docking Software
- Digital Evidence Management System
- Hytera HyTalk Pro
- Mobile Video Surveillance System

## Hytera Body Camera Solution



## Application Scenarios



Police Officers



Traffic Officers



Judicial Officers



Electricians



Railway Workers



Security Guards



## Body Camera



### 4G BODY CAMERA

## SC580

The SC580 is a smart 4G body camera, that captures and streams videos, audio, and photos from the field to the command center over the cellular network or WLAN. Weighing just 158g allows officers to comfortably hold it in their hand or wear the uniform all day long without any burden. In such a thinner body, the body camera is equipped with a 3,200 mAh battery that extends an entire shift and beyond. Leveraging the Hytera PTTtoC application and cellular network, the body camera works as a two-way radio to deliver PTT services between the officer and dispatcher for better collaboration.

### Record Stable Video Always

With the 6-axis image stabilization technology, the body camera captures stable and clear videos even when the user is on the move.

### See Through the Darkness\*

The body camera captures crisp-clear, colorful images with details even in the darkness due to its starlight standard sensor.

### Capture the Complete Event

Pre-event recording enables the body camera to automatically capture video and audio up to 120 seconds before a recording is manually activated. It ensures crucial events are captured and recorded as complete as possible – even before pressing the recording button, especially when the scene unfolds volatily.

### Last Beyond the Shift

Thanks to the 3200 mAh battery and the power consumption optimization, the body camera can record videos for up to 10 hours in a row.

### Video Call while Recording

The body camera comes with front and rear cameras. Officers can use the front camera to make a video call while the rear HD camera keeps recording what's happening in the field.

### Record intuitively

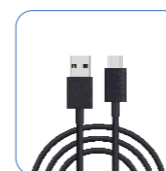
With a large and intuitive Video Recording Key, users can intuitive start the recording through quick and simple operation amid the hustle of onsite activities.

## Accessories

● Standard ● Optional



● Battery



● USB Type-C Data Cable



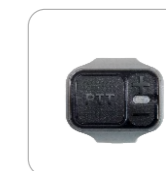
● Power Adapter



● Belt Clip



● Multi-Unit Charger



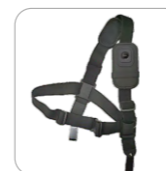
● Wireless PTT



● Magnet Mount



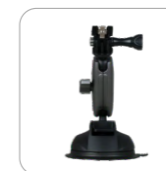
● Molle Fast System



● Shoulder Strap



● Chest Harness



● Car Bracket



● Motorcycle Bracket

## Specifications

Dimensions (H x W x D)	91 mm x 55 mm x 29 mm
Weight	158 g (with battery)
Video File Format	MP4
Image File Format	JPG
Storage Capacity	16GB/32GB/64GB/128GB/256GB
Interface	USB Type-C
Screen	2.0-inch
Battery Life	≥ 10 hrs
Positioning	GPS/BDS/GLONASS/A-GPS
Camera	Front camera x 1; rear camera x 1
Battery Capacity	3,200 mAh
IP Rating	IP68

\*Only available for SC580 (Starlight Night Vision).



## 4G BODY CAMERA

# VM780

Hytera VM780 is an LTE-enabled body camera that allows law enforcement officers to capture everything that happens during an incident and then share live videos, photos, and audio recordings with the command center for improved situational awareness. With the 216° rotatable HD camera, you can adjust the camera angle to meet various shooting needs without changing the way you wear it. The VM780 can serve as a push-to-talk over cellular PoC radio for voice communication over 3G, 4G, or WLAN, during which the two built-in 1.5-watt speakers make you hear every word in any noisy environment. Moreover, the VM780 can provide fast positioning services using GPS, BDS, GLONASS, and AGPS so you can track your people or device anywhere.

### 216° Rotatable HD Camera

The lens of the VM780 can be rotated vertically by 216°, which provides optimal angle of view and flexible wearing positions for you to capture critical events.

### Ultra Long-lasting Battery

The 3,500 mAh battery, with low power consumption technology, enables the VM780 to provide up to 12 hours of continuous recording on a single charge to cover entire shifts.

### All-round Data Security

The unbreakable AES256 encryption algorithm and digital signature technology ensure the best protection of your digital evidence such as photos, audios, and videos from storage to transmission.

### Be a PoC Radio

The VM780 serves as a two-way radio with the PoC apps. Over 3G, LTE, or WLAN, the VM780 allows you to make a voice call simply by pressing the push-to-talk (PTT) key. It has two 1.5-watt speakers to deliver loud and clear audio during the call, even in highly noisy environments.

### Starlight Night Vision (MGS version)

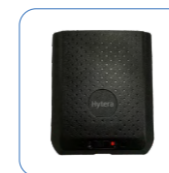
The astonishing low-light sensitivity of the VM780 (MGS version) is made possible by a starlight sensor. Even in extreme low-light environments, it can still capture clear and colorful images with more details such as human face or license plate number.

### Micro Gimbal Stabilization (MGS version)

The built-in MGS module has a flexible movement space in the camera module, realizing the better anti-shake performance. When you use the VM780 (MGS version) to capture a video, the stabilized image will make you feel like using a camera on a tripod.

## Accessories

● Standard ● Optional



● Battery



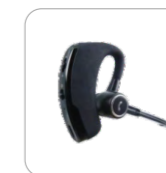
● USB Data Cable



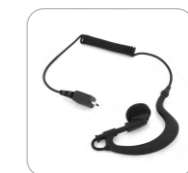
● Power Adapter



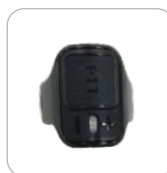
● Belt Clip



● BT Earpiece



● Earset



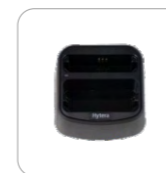
● Wireless PTT



● External Camera



● Multi-Unit Charger



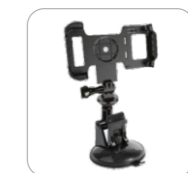
● Charger



● Shoulder Strap



● Chest Harness



● Car Bracket

## Specifications

Dimensions (H x W x D)	115 mm x 61 mm x 26 mm
Weight	205 g (with battery)
Video File Format	MP4
Image File Format	JPG
Storage Capacity	16GB/32GB/64GB/128GB
Interface	Micro USB
Screen	2.8-inch
Battery Life	≥ 12 hrs
Positioning	GPS/BDS/GLONASS/AGPS
Camera	216° rotatable lens
Battery Capacity	3,500 mAh
IP Rating	IP68



## 4G BODY CAMERA VM750D

Hytera VM750D is a smart body camera designed to capture, store, and upload evidence such as pictures, videos, and audios in the field, especially for those involved in public safety. Over 3G, LTE, or WLAN, the VM750D allows you to stream the real-time video in the field to the command center for better situational awareness and make a voice call simply by pressing the push-to-talk (PTT) key. With a 160° diagonal field of view (DFOV), the VM750D expands your view in a significant way, seeing almost as much as your eyes can. So you can capture more details, with this incredible camera. Equipped with powerful AI algorithm, the versatile VM750D is capable of facial and license plate recognition. The built-in smart multi-functional sensor in the VM750D can detect what is happening and automatically activate an alarm in case of blocked camera, unauthorized disassembly, no movement within preset time, and an officer who is down.

### 160° Diagonal Field of View

The super wide-angle camera allows you to capture more objects in a broader scope. Even at most one meter away, the body camera can capture the hand actions at close quarters.

### Be a PoC Radio

With Hytera PoC solutions adopted, the VM750D allows you to transmit video and audio for efficient dispatch. Just with the press of the large PTT which is easy to locate and operate, you can talk with your people anytime and anywhere over 3G, LTE or WLAN.

### Ultra Long-lasting Battery

The 3,500 mAh battery, with low power consumption technology, enables the VM750D to provide up to 12 hours of continuous recording on a single charge to cover entire shifts.

### AI-driven facial recognition

The powerful AI-driven facial recognition algorithm enables the VM750D to quickly capture and recognize the fast-moving faces, track multiple persons, and trigger alarms whenever there is a face match.

### NFC-enabled ID switch

Just tapping the NFC card to the VM750D, you can switch your ID and easily access all existing video and audio footage. This simplifies ID switch, enhances body camera availability, and effectively track the source of evidence.

### Intelligent Scene Detection

The body camera incorporates the multi-functional sensor that will automatically send an alarm to the control center when detecting Man down, occlusion, stay-long, dismantling.

## Accessories

● Standard ● Optional



● Battery



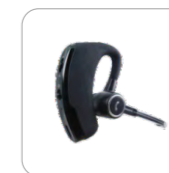
● USB Data Cable



● Power Adapter



● Belt Clip



● Wireless Earpiece



● Wireless PTT



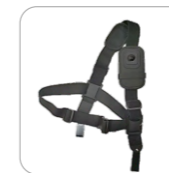
● Multi-Unit Charger



● Magnet Mount



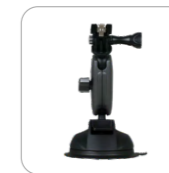
● Molle Fast System



● Shoulder Strap



● Chest Harness



● Car Bracket



● Motorcycle Bracket

## Specifications

Dimensions (H x W x D)	116 mm x 61 mm x 26 mm
Weight	210 g (with battery)
Video File Format	MP4
Image File Format	JPG
Storage Capacity	16 GB / 32 GB / 64 GB / 128 GB
Interface	Micro USB
Screen	2.8-inch
Battery Life	≥ 12 hrs
Positioning	GPS/BDS/GLONASS/AGPS
Battery Capacity	3,500 mAh, removable and also fixed
IP Rating	IP68



### Light but Powerful

Smaller than a standard business card and weighing less than 115 grams, GC550 is easy to hold in the palm or clip on the outfit of officers who are always on the go. This compact but mighty camera lightens the everyday carry for frontline officers.

### Stress-free Wearing Experience

Officers can wear GC550 on the epaulette or the front pocket by using different carrying accessories. A 360° swivel clip allows officers to easily rotate GC550 and find the best recording angle.

### Power Extra-long Shift

GC550 has a field replaceable main battery that can record videos continuously up to 9 hours at 720p. For an extra-long shift, take a spare battery, and swap it quickly for another 9 hours. During battery replacement, GC550 can keep recording for 5 minutes thanks to the built-in backup battery.

### Stunning Details with 2K Resolution

Video resolution matters. GC550 records every encounter that occurs around officers in ultra-clear 2K resolution. Such clearer and smoother videos help to reveal crucial details for judiciary professionals, who can better understand what happened and make more informed decisions accordingly.

### Slide to Record, Quick and Right

The intuitive sliding switch makes recording activation easier than ever. Its changes of physical position on the camera help officers to know whether the recording is on or off with a simple glance, even in intense and stressful situations.

### Data Airbag

Data security design, to deal with sudden drop or impact, to ensure that the recorded video is automatically saved in time.

## Accessories

● Standard ● Optional



● Battery



● USB Type-C Data Cable



● Swivel Clip



● Power Adapter



● Short Swivel Clip

## Specifications

Dimensions (H x W x D)	73 mm x 48 mm x 25.5 mm
Weight	115 g (with battery)
Video File Format	MP4
Image File Format	JPG
Audio File Format	AAC
Field of View	≥ 120°
Storage Capacity	16GB/32GB/64GB/128GB/256GB
Interface	USB Type-C
Screen	2.0-inch
Battery Life	≥ 9 hrs (720p)
Battery Capacity	2,100 mAh
IP Rating	IP67



## GENERAL BODY CAMERA

# GC550

Hytera GC550 2K Mini Body Camera is designed to capture clear photos and videos as objective evidence from the field to the court. It boasts a variety of powerful features, both hardware and software, to promote transparency of law enforcement and workplace interaction, as well as to ensure safety for professionals on duty. Its 2K HD wide-angle camera records more details in a 150° super-wide field of view. GC550 as a new member of the Hytera body camera series is the smallest in size and lightest in weight; its ergonomic layout and shape make it easy to operate single-handedly. The sliding switch enables the quick start of recording in emergencies and intuitively shows the recording status through its position.

# Specifications

Hytera has developed a series of body-worn cameras, from traditional types to models with 4G/LTE capability, to provide our customers with a variety of choices and possibilities.



**GC550**



**SC580**



**VM750D**



**VM780**

	GC550	SC580	VM750D	VM780
Weight	115 g	158 g	210 g	205 g
Dimensions	2.0-inch	2.0-inch	2.8-inch	2.8-inch
Battery Life <sup>1</sup>	≥ 9 hours	≥ 10 hours	≥ 12 hours	≥ 12 hours
Max. Storage <sup>2</sup>	256 GB	256 GB	128 GB	128 GB
Video Resolution	2K	1080p	1080p	1080p
AES-256 Encryption	✓	✓	✓	✓
Positioning		✓	✓	✓
WLAN		✓	✓	✓
4G/LTE		✓	✓	✓
Live-Streaming Video		✓	✓	✓
PTT over Cellular		✓	✓	✓
Starlight Night Vision		✓	✓	✓
Image Stabilization <sup>3</sup>		✓	✓	✓
Wired RSM			✓	✓
NFC			✓	✓
Facial Recognition <sup>4</sup>			✓	✓

<sup>1</sup> Battery Life will be adjusted according to actual business changes.  
<sup>2</sup> The Storage capacity is available in 16GB, 32GB, 64GB, 128GB, or 256GB.  
<sup>3</sup> VM780 (MGS Version) supports Micro Gimbal Stabilization.  
<sup>4</sup> Facial recognition is optional for VM750D and VM780.

## DOCKING STATION

### Wall-Mounted Docking Station EDS50

The EDS50 is a wall-mounted docking station that acquires, stores, manages digital evidence from the body camera, and charges the body camera. With built-in modules such as NFC, fingerprint, electronic lock, and WLAN, the EDS50 is more intelligent with high-level security. It is applicable to justice, market supervision, emergency, transportation, and more.



#### Wall mount

Mount the EDS50 onto the wall, giving maximum flexibility and saving valuable space.

#### Secure and smart design

Lock the pocket door automatically. Tap the fingerprint or NFC card to unlock it. Associate evidence with officer ID.

#### More pockets

Extend the pocket to support a maximum of 24 body cameras.

#### Plug and play

Acquire the digital evidence and charge the body camera without cables, thanks to the contact design.

#### Audible and visible reminder

Show you the progress of acquisition and charging through the LED indicator and the Voice Broadcast feature.

#### Remote upload

Enable you to upload the evidence through the WLAN.

Specifications	
Display	13.3-inch touchscreen
Hard Disk	Support up to 32 TB
Quantity of Acquisition Pocket	6 (standard); can be extended to 24.
Fingerprint Module	Support
NFC Module	Support
WLAN	2.4G/5G, 802.11a/b/g/n/ac
Operating System	Windows 10, 64-bit
Network Port	RJ45/1000 Mbps
Operating Temperature	-10°C to +55°C
Power Supply	110-240 V AC

## Portable Docking Station EDS30

With the independent operating system (OS) and 10.1-inch large touchscreen, the EDS30 helps you acquire, store, and manage data from the body camera. It can also charge the body cameras in batch during data acquisition. Compact and weighing only 7.5 kg, it is convenient for you to carry on the move. The EDS30 can be used in justice, emergency, market supervision, transportation, energy, and more.



### Compact and lightweight

Easy to carry it from one place to another by hands thanks to the weight of 7.5 kg and portable design.

### Fast acquisition, fast charging

Acquire evidence simultaneously from 8 body cameras with the speed over 8 Mbps. Charge the body cameras during acquisition.

### Remote upload

Enable you to upload the evidence through the WLAN.

### 10.1-Inch HD touchscreen and independent OS

Show you the acquisition and charging status, and play back the audios and videos.

### Dustproof and waterproof

Withstand the dust and water relying on the injection molding so you can use it in harsh environments.

### Massive storage

Provide you a storage up to 48 TB, as well as cloud storage.

Specifications	
Dimensions (H x W x D)	436 mm x 298 mm x 110 mm
Weight	7.5 kg
Display	10.1-inch touchscreen
Hard Disk	Support up to 48 TB
Quantity of Acquisition Pocket	8 (standard)
WLAN	2.4G/5G, 802.11a/b/g/n/ac
Network Port	RJ45/1000 Mbps
Operating System	Windows 10, 64-bit
Power Supply	110-240 V AC
Operating Temperature	-10°C to +55°C

## Kiosk Docking Station ZCS-HYT65

The ZCS-HYT65 is designed to acquire, store, and manage the digital evidence from the body camera, charge the body camera, calibrate the time of the body camera, and clear the data on the body camera, and more. The 19-inch touchscreen is large and intuitive enough to ease your operations. The fingerprint recognition module enables you to log in to the product just by one touch. The product is widely used in justice, emergency, market supervision, transportation, energy, and more.



### Fingerprint Recognition

Make login much faster and data more secure.

### Fast Acquisition, Fast Charging

Acquire evidence from 20 body cameras in 50 minutes with the speed over 10 Mbps. Charge the body cameras during acquisition.

### Unattended Mode

Acquire evidence automatically when the body camera is inserted.

### Massive Storage

Provide you a storage up to 128 TB, as well as cloud storage.

### 19-inch HD Touchscreen

Easy to manage audio and video evidence.

### Ergonomic Design

Enable you to operate in a comfortable posture with the Kiosk design.

Specifications	
Dimensions (H x W x D)	475 mm x 470 mm x 1620 mm
Display	19-inch touchscreen
Hard Disk	Support up to 128 TB
Quantity of Acquisition Pocket	20
Fingerprint Module	Optional
Network Port	RJ45/1000 Mbps
Operating System	Windows 10, 64-bit
Power Supply	110-240 V AC



## Video Management System



## Highlights

- Auto Acquisition**  
 Automatically acquire and upload evidence in batches to reduce labor costs and risk of misoperation.
- Localized evidence management**  
 Replay and make notes for the evidence, tag the evidence in batches, and more.
- Auto Free Up Storage Space**  
 Automatically delete the earliest evidence to release space at interval.
- Evidence Export**  
 Facilitate the administrator to export the evidence for archive and storage.
- Auto Upload**  
 Automatically upload evidence to the digital evidence management (DEM) platform.
- Auto Upgrade**  
 Automatically detect and upgrade body cameras, when finished evidence collection.

## Features

**More**

Keyword: File Name or Officer ID or Officer Name or Remarks

Recorded: Start Time [calendar icon] - End Time [calendar icon]

Collected: Start Time [calendar icon] - End Time [calendar icon]

System Mark: Important [x] Not Important [x]

Device Mark: Important [x] Not Important [x]

Uploaded: Uploaded [x] Not Uploaded [x]

[Reset] [Search]

### Search Conditions

Search evidence by keywords such as file name, officer ID or name, or by recording time, acquisition time, system tag, device tag, or upload status.

**Evidence View**

Officer: [dropdown] Date: [dropdown] [Refresh] [Close]

Officer ID or Officer Name: [input]

Officer ID: 168888  
Officer Name: BWC User  
Recorded: 2021/11/23 11:18:52

00:00:01 / 00:00:07

Audio: 177.01 KB  
Video: 2.16 GB  
Photo: 11.16 MB  
Audio: 161.17 KB

### Video Playback

Play back a video in a rapid, slow, loop, or continuous motion. You can also perform snapshot or more operations.

## Integrated Docking Software

IDS is an evidence collection software for body worn camera, which is used to acquire, view, play back, and export evidence and upgrade the body cameras, The unattended mode can free you from tedious and repetitive acquisition and upload tasks, ensure evidence security, and enhance efficiency.

**Upload List**

Uploading			Uploaded			
No.	File	Recorded	Upload Mode	Uploaded	Progress	Operation
1	D:\Acquisition\0612RD1583\DCIM	2021/11/23	Auto	No		↻
2	D:\Acquisition\0612RD1583\DCIM	2021/11/23	Auto	No		↻
3	D:\Acquisition\0612RD1583\DCIM	2021/11/23	Auto	No		↻
4	D:\Acquisition\0612RD1583\DCIM	2021/11/23	Auto	No		↻
5	D:\Acquisition\0612RD1583\DCIM	2021/11/23	Auto	No		↻
6	D:\Acquisition\0612RD1583\DCIM	2021/11/23	Auto	No		↻
7	D:\Acquisition\0612RD1583\DCIM	2021/11/23	Auto	No		↻
8	D:\Acquisition\0612RD1583\DCIM	2021/11/23	Auto	No		↻
9	D:\Acquisition\0612RD1583\DCIM	2021/11/23	Auto	No		↻

1 / 1 Pages/ 9 Records [Go]

### Upload Status

Show you the upload status in percentage in the upload list.

**Log**

System [dropdown] Device [dropdown] [Operator Log] [Search] [Export] [Clear]

No.	Time	Operator	Type	Content
1	2023-11-15 16:44:22	admin	Digital Evidence	Play Digital Evidence file: 0612RD2032
2	2023-11-15 16:44:15	admin	Digital Evidence	Play Digital Evidence file: 0612RD2032
3	2023-11-15 16:43:44	admin	User	Add user
4	2023-11-15 16:43:05	admin	User	Add officer: 1(1)
5	2023-11-15 16:42:18	admin	Digital Evidence	(Manual/Delete Digital Evidence file: C:\
6	2023-11-15 16:41:58	admin	Digital Evidence	(Manual/Delete Digital Evidence file: C:\
7	2023-11-15 16:38:41	admin	Settings	modify language

1 / 35 Pages/ 698 Records [Go]

### Log

Support to search, view, export the log of system and devices.



# Highlights

## Tamper-proof

With the AES256 encryption technology, the DEM protects the evidence from being tampered. Also the DEM ensures security and integrity of evidence through the role-based access control.

## High Usability Architecture

Thanks to the browser/server (B/S) architecture the DEM allows you to view and manage digital evidence through the browser on any PC in a secure network environment.

## Redundant Backup

The DEM supports active-standby configuration for redundancy. If the active server fails, the standby server automatically takes over to keep the system running properly.

## Open Platform

Benefiting from open APIs, the DEM is compatible with third-party applications with more customized features.

## Cascading Mechanism

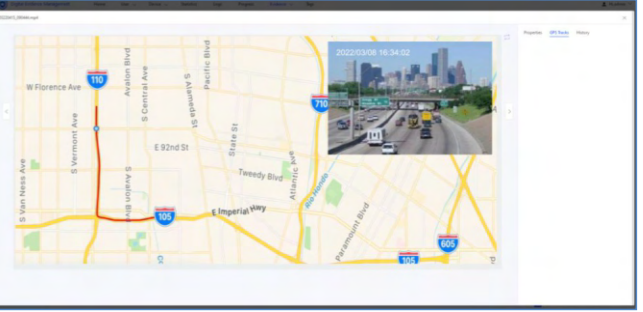
Based on the cascading mechanism, evidence files on the lower-level DEMs can be automatically or manually uploaded to the upper-level DEM for unified management.

## Smooth Upgrade

With the distributed file system, the DEM supports smooth upgrade without affecting services.

# Features

File Name	File Size	Upload Time	Officer Name	Officer ID	Received	Action
20220415-1000001	100MB	2022-04-15 10:00:00	John Doe	100001	2022-04-15	[Icons]
20220415-1000002	200MB	2022-04-15 10:00:00	John Doe	100001	2022-04-15	[Icons]
20220415-1000003	300MB	2022-04-15 10:00:00	John Doe	100001	2022-04-15	[Icons]
20220415-1000004	400MB	2022-04-15 10:00:00	John Doe	100001	2022-04-15	[Icons]
20220415-1000005	500MB	2022-04-15 10:00:00	John Doe	100001	2022-04-15	[Icons]



## Evidence Management

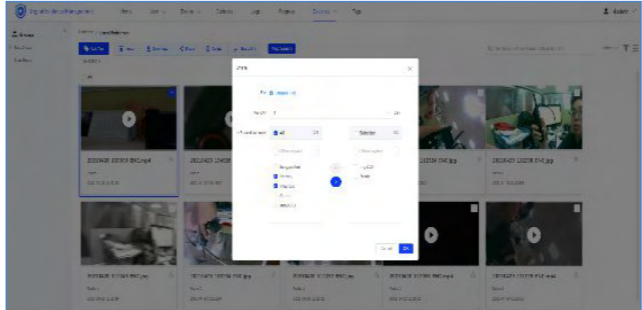
View, search, and download evidence from the body camera or radio.

## Map-based Evidence

Query and play back the evidence on the e-map for case tracking.

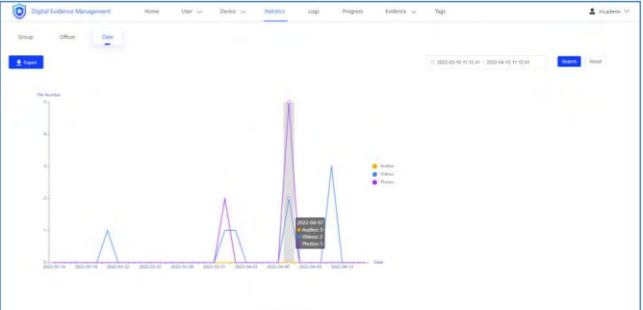
# Digital Evidence Management System

Digital Evidence Management (DEM) is a management system designed to collect, store, query, and analyze the digital evidence such as videos, audios, and photos from integrated docking stations (IDS), body cameras, or other terminals. Adopting a micro service architecture, the DEM supports local deployment and cloud-based deployment. Providing rich services such as evidence management, map-based evidence, evidence tags, and data analysis, the DEM is widely used in areas including public safety, judiciary, emergency, firefighting, transportation, and energy.



## Evidence tags

Mark and label the evidence with case information, users location, or other description.



## Data Analysis

Sort the evidence by organization, user, and time to assist with scene reconstruction.



## Highlights

### Interconnection Communication

It supports interconnection between PoC and DMR, combining the advantages of both Broadband and narrowband communication systems to provide a wider coverage, more stable, clear, and reliable voice communication means.

### Dispatch Service

The location of terminal can be displayed on the map in real-time. At the same time, the system supports audio and video scheduling for multiple types of terminals on the map.

### Converged access of multiple types of radios

Support unified access and mixed grouping of PoC radios, Multi-mode radios, Body Camera, PMR radios, etc. Multi-mode radios support the same number to access broadband and narrowband networks, realizing multiple services such as voice, video, location, and multimedia data.

### Enriching Video Service

It supports video services such as video call, video pull, and one-click video return, helping commanders to understand the situation on the spot in real time and accurately make a decision.

### Multimedia Message Service

It supports the sharing of information such as pictures, videos, and locations through multimedia messages, so that users can efficiently provide diverse data information to group members and dispatchers.

### Security and Reliability

The system supports security features such as hot standby, disaster recovery, load balancing, and E2EE to provide our customers with secure and reliable communication services.

## Features



### Voice

- Half-duplex voice individual call
- Full-duplex voice individual call
- Voice group call
- Group call priority
- SOS emergency call



### Video

- Half-duplex video individual call
- Full-duplex video individual call
- Video group call



### Dispatch

- Broadcast call
- Voice/Video conference
- User stun/kill/revive
- Call interrupt/override
- Subscribe to GPS
- Ambience listening
- Video pull/push/forward
- Map-based DGNA



### Management

- User & Group management
- Audio & Video data management
- Network management



### Data

- Multimedia SDS
- Status message
- Storage and Forwarding



### Security

- Disaster Recovery
- E2EE
- Authentication

## Hytera HyTalk Pro

The System is a multimedia communication converging with narrowband communication solution that based on the public network, It provides not only rich services (voice, video, and data), but also seamless interconnection between PoC and DMR. As a result, users could reuse the exist DMR trunking system while upgrade from voice service to multimedia services.



## Mobile Video Surveillance Platform

The Mobile Video Surveillance Platform is a comprehensive body cameras management solution. It integrates the video surveillance, visualized dispatch, and push-to-talk communications into a collaborative solution with enhanced user experience. This effectively removes barriers to information access and sharing for both officers in the field and commanders in the control center. The user-friendly interface makes you easily and quickly access the live video, photos, and audio captured by the body camera. At a click of the mouse, you can talk with your people in the field. All of these presents clear and easily understood information for better situational awareness to ensure resource synchronization and officer safety.

### Highlights

#### High Concurrency

A single server can access a maximum of 5000 channels and 200 concurrent channels. A single client can support pull-up of 50 channels of videos simultaneously.

#### Focus on Business

Focus on mobile monitoring, real-time positioning, video pull-up, track monitoring, electronic fence, group call, remote setting and other functions.

#### Protocol Compatibility

Can be accessed through the 3G, LTE, or WLAN network. Support standards protocols including ONVIF and RTSP.

#### Great Openness

With great openness, the platform is able to interconnect with information security and other third-party mainstream monitoring platforms, or be integrated by third-party platforms.

#### Easy to Deploy

Can be deployed in public, private, or local area network. Realizes high-capacity storage and data backup through a static IP.

#### Flexible Storage

With built-in storage service, it can support local streaming media storage. Network deployment can connect to cloud storage to achieve mass storage and data backup.

### Features



#### Real-time Dispatch

- Video and voice pull
- Remote snapshot
- Remote voice recording
- Remote video recording
- Remote playback
- Audio and video file query



#### Trunking Communications

- PTT call
- Instant messaging



#### Positioning Management

- Real-time positioning
- Historical track
- Route planning
- Electronic fence



#### Device Management

- Basic information
- Parameter modification
- Acquisition settings
- Watermark
- Online/offline presence
- Time synchronization
- Alarm management
- Remote check of device
- Status information